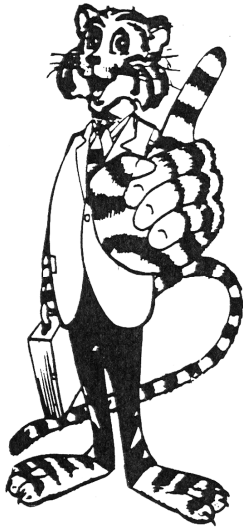


PQ Pointers



*An Information Booklet Prepared for
Parents and Students of Pequenakonck
Elementary School to Help Our Students
Know and Mind Their P's and Q's*

PQ POINTERS

Welcome	2
Helpful Numbers	3
PQ Philosophy	4
PQ Spirit	5
Riding the Bus	6
Student Dress	7
Tigers C.A.R.E.	7
Behavior of Students	7
Discipline at PQ	8
Guidelines for Discipline	9
School Suspension	11
Notes to School	12
Assemblies for Enrichment	12
Fire Drill	12
Disaster Drill	13
Student Council	14
Breakfast	15
Lunch	15
Recess	16
Birthdays and Parties	18
When you have a question...	18
Student Absence and Tardiness	19
Telephone Calls	20
School Hours	21
Visitors	21
Parking	22
Six-Day Cycle	22
Student Performances	23
District Calendar	24, 25

Welcome

Dear Parents and Students,

Welcome to Pequenakonck Elementary School! We are pleased to have you as a member of our school family.

Pequenakonck Elementary School was opened in September 1972. There are approximately 600 students in kindergarten through fifth grade. We want our school to be a safe, pleasant place where children like to learn and where people like to visit. The cooperation of each student and parent is important to maintain an atmosphere that is conducive to learning. Our school is a very busy place where consideration of others is essential.

This handbook provides information about procedures and expectations that we think are important for parents and students to review. In addition to this handbook, there is a separate booklet for kindergarten entitled "Kindergarten Guidebook". If your family joins PTO, a student directory comes with your membership. Finally, information about the school is located in the district calendar and on the website, www.northsalemsschools.org. All of these resources will help you learn and find out about Pequenakonck School. With adults and students working together, we hope for another excellent school year!

If you have any questions, suggestions or concerns about school rules, policies or procedures, please let us know. The staff and I encourage your involvement.

Sincerely,

Roberta Reiner
Principal



HELPFUL NUMBERS

Pequenakonck Telephone Number	(914) 669-5317
Press:	4 for Attendance
	5 for Staff Directory
	6 for Health Office
	7 for Main Office
	8 for Psychologist—Mr. Tendler
	9 for Social Worker—Mr. Latterner
Pequenakonck Fax	(914) 669-4326
Health Office Fax	(914) 669-5442
District Office	(914) 669-5414 ext. 1011
Transportation	(914) 669-5414 ext. 1038
Bus Garage	(914) 669-5854
Main Office Hours	8:00 a.m. to 4:00 p.m.
School Hours	8:25 a.m. to 3:05 p.m.
Two-Hour Delay	10:25 a.m. to 3:05 p.m.
Early or Emergency Dismissal	Dismiss at 11:30 a.m.

Pequenakonck Philosophy

The purpose of education is to develop the uniqueness in each child to the fullest of his/her potential. An elementary school program should provide opportunities for youngsters to grow academically, physically, socially, culturally and emotionally. The educational program of Pequenakonck School, therefore, is based on the beliefs that:

- All children should be treated with dignity and respect. Emotional, social and intellectual developments are important aspects of each child's growth.
- The teacher's knowledge of each child should be as thorough as possible for an effective teaching relationship.
- The basic skills of reading, writing and mathematics are fundamental to the intellectual development and achievement of a child.
- Art, Music and Physical Education are an integral part of the development of the total child.
- The educational program should progress developmentally from a knowledge of the concrete to the abstract. The child should find the learning experience motivating, rewarding and enjoyable.
- Multi-sensory experiences are important in the learning process.
- Progress should be individually measured and evaluated.
- A variety of instructional groups should be provided according to the individual needs of the students.
- Individual teacher talents and strengths should be reflected in the instructional techniques and program. Creativity and innovation are encouraged.
- Physical space should be flexible enough to satisfy the needs of both student and teacher.
- **Communication between home and school is an integral part of the educational process.**

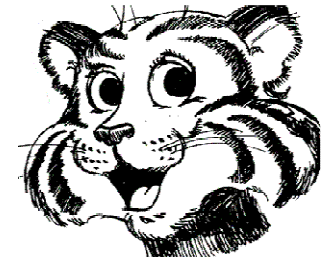
PQ SPIRIT

Our School Colors

Blue and Gold

Our School Mascot

Cubby the Tiger



The PQ Song

Written by Charles Thatcher

Tigers working, tigers at play
Pequenakonck ever molding friendships strong each day
Our gold and blue ever building knowledge strong and true
We're tiger cubs loyal to PQ

The PQ Tigers C.A.R.E Cheer

We are the Tigers (*echo each verse*)

The PQ Tigers
Everywhere we go
People want to know
How we care
So we tell them
C-Cooperation
A-Act Responsibly
R-Respect each other
E-Expect Honesty
That's what we do
Here at PQ
PQ Tigers CARE!!!!!!!!!!

PQ Tigers C.A.R.E. Spirit Cheer

We don't know what you've been told (*echo each verse*)
PQ Tigers have lots of soul
We've got spirit, we've got pride
These are things we can't hide
Try to top us if you dare
PQ Tigers really CARE!!!!!!!!!!

RIDING THE SCHOOL BUS

Appropriate behavior on the school bus ensures a safe ride. Students are required to remain in their seats, to face forward, to wear seat belts, to keep the aisles clear and to talk in moderate tones. At the beginning of the school year, the bus drivers meet their students.



Emergency procedures are reviewed. The school bus rules are listed on the school calendar. Parents, please review these with your children. Please make a special note of what may and may not be carried on the school bus. Children will be assigned one bus for the school year. Switching buses is not permitted.

Behavior at the bus stop is the responsibility of the parents and the students. When a student has a problem on the school bus, he or she should speak to the bus driver. After the children disembark in the morning, a student may wait to see the bus driver to explain the problem. At the end of the day, this can be done when he/she gets off. If a student is reluctant to speak to the driver, the problem should be brought to the attention of parents, the teacher, the assistant principal or the principal.

Problems of a serious nature will be brought to the attention of the principal and director of transportation by the drivers. Students are suspended from transportation when behavior is unacceptable. A form is mailed to parents notifying them of the student's misbehavior and suggested resolution.

We hope everyone will cooperate in order to have a safe and enjoyable ride to school and back home again.

STUDENT DRESS

School dress requires clothing that is safe and appropriate for indoor and outdoor activities. Safe school shoes should be worn. Sneakers with wheels are not permitted. Halter tops, short-shorts and beach outfits are not appropriate clothes. Hats and head scarves may be worn to school, but not in school. T-shirts, hats, buttons, etc. displaying foul language may not be worn to school. Parents of children who are improperly dressed will be called and their cooperation is requested in correcting the clothing worn to school.

TIGERS C.A.R.E.

Tigers C.A.R.E. is the PQ character education program. The philosophy of the program is to support student learning of positive behaviors in all school environments. A system of acknowledgements and clear expectations are the hallmark of the program. **Tigers** refers to our school mascot, Cubby the Tiger. The letters of **CARE** stand for : **C=Cooperation, A= Act responsibly, R= Respect for one another, E= Expect honesty.**

BEHAVIOR OF STUDENTS

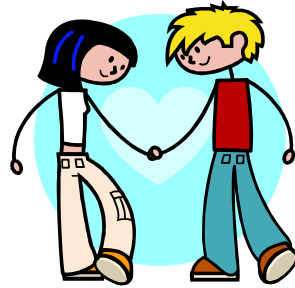
Standards are important for any organization to function smoothly. We all like to feel proud of our school and of our students; of their politeness, of their awareness of the feelings of others, and of their cooperation. Discipline is a shared responsibility—shared by the parent and child, teacher and child, and administrator and child. When adults are clear about their responsibility and children are clear about their responsibility, we can expect results.

At Pequenakonck Elementary School, we have established the following criteria to help parents and students be aware of our expectations of student behavior. Everyone has a contribution to make. Greater details about student behavior may be found in the district Code of Conduct and the Acceptable Use Policy for Technology and the Internet.

DISCIPLINE AT PQ IS A TOTAL SCHOOL PROGRAM

The **student** is responsible for following rules of PQ:

- Follow directions.
- No fighting; keep hands, feet and objects to yourself.
- Respect school property.
- No swearing, foul language, teasing or name calling.
- Obey and respect all adults.
- No gum.
- No one has the right to interfere with another person's right to learn.
- Hand held technology including games and MP3 players may not be used during school hours
- Cellular telephones must be off and remain in the student's book bag during school hours.



The **parent** is responsible for:

- Complimenting, praising and reinforcing children when appropriate. Children like and need to know when they are behaving correctly at home as well as in school.
- Seeking out the advice and guidance of teachers in reinforcing responsible behavior.
- Remembering that discipline is a shared responsibility. Cooperating with school officials and carrying out appropriate discipline measures are important parenting responsibilities.
- Reviewing school discipline rules and regulations. One example would be reviewing school rules. Another example is reviewing the rules for riding the school bus as printed on the school district calendar.



The **teacher** is responsible for:

- Assisting in the development and enforcement of the school rules.
- Communicating to students and parents what is needed in order to teach and assist students in reaching individual behavioral goals.
- Establishing a classroom management program and atmosphere that elicits proper behavior and which gives every student his/her right to an education.
- Communicating with students and parents regarding behavior, successes, problems and proposed solutions.

The **principal** is responsible for:

- Maintaining consistent school rules, expectations and responsibilities.
- Providing support for the staff in their efforts to elicit proper behavior around the school.

GENERAL GUIDELINES FOR DISCIPLINE

- Periodically reviewing established rules and expectations for students' behavior.
- Assisting with the referral process and everyone's part in the procedure. (There is an explanation of this on following page.)

The primary goal of Pequena-konck Elementary School is to assist students in developing a high degree of self-direction and personal responsibility. A major task of teachers, students and parents is to maintain an educational environment and a program supportive of each child's becoming all that he or she can be.



Responsibility and self-direction are learned. As students get older, we expect increased responsibility for self direction, daily effort and quality of relationships with other people. The district provides

In the case of student misbehavior and/or poor judgment, the school's staff will proceed on the following assumptions:

- Meaningful assistance to the student is of primary importance.
- Early and continued parental involvement is vital.
- Continued attendance in school is important. The total staff has a role to play in the resolution of behavioral problems and may be called upon to participate.

Student problems can exist that are beyond the resources of the school to solve. The principal of the school is authorized to take the steps deemed necessary to protect the rights and safety of other students. The involvement of outside resources or agencies may be necessary to assist in resolving the student's problems.



When the students are unable to accept their responsibilities, it is the responsibility of the parents and staff to help determine the cause and to initiate action to eliminate it.

Discipline Reports are written to communicate the child's behavior to the parents. A copy of the report is kept at school.

Recess Detention is a disciplinary step or consequence designed to help teach students that they need to be responsible for their own behavior and actions. In the event that a student continues to display negative behavior, he or she may receive a detention from any school adult. Recess detention removes a student from the recess period. The student is sent to the office for this period.

The following behaviors are of such a serious nature that a student exhibiting them may be assigned a detention or significant consequence determined by staff. These behaviors include:

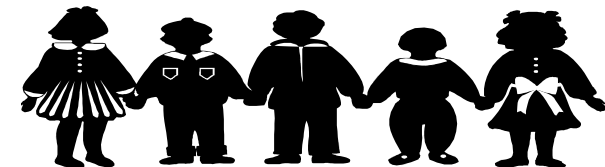
- Fighting.
- Verbal or physical disrespect toward adults.
- Defacing or destruction of school property.
- Throwing food.
- Other behaviors construed as a serious disruption of a safe, calm school environment.

SCHOOL SUSPENSION

Students who disturb the learning of others may be suspended from school in accordance with Board of Education policy. We like to think that a student who misbehaves will try very hard to correct the action and not require removal from school. All of us at school will work very hard to have behavior addressed constructively as much as possible.

NORTH SALEM GREEN INITIATIVE - COMMUNICATIONS ONLINE

In an effort to reduce our environmental impact, the North Salem CSD will limit the amount of paper communications sent home. Each Tuesday you will receive an e-mail informing you of updates on the district web site. This will include PTO and administrative communications. Classroom teachers will inform you of their communication method on Curriculum Night. Links to community groups for upcoming events will be available.



NOTES TO SCHOOL

A note written by a parent or guardian **must** be brought to school **each day** if the student will not be riding their scheduled bus home, the student is being picked up, attending the YMCA or an after-school activity.



If a family has an emergency and must be away during school time, a note of explanation should be sent to the teacher, in advance if possible, or a call should be placed leaving word for the teacher at school. In some cases, at the discretion of the teacher, assignments may be prepared. Teachers must receive requests for assignments by 9:00 a.m. in order to have an assignment ready by 3:05 p.m. Assignments are at the discretion of the teacher. A parent's note is required after every student absence.

ASSEMBLIES

Assembly programs are considered an important extension of the regular instructional program. During assemblies, we expect students to relax and enjoy themselves, but also learn from what is being presented. Polite behavior helps all of us feel proud of our student body. Students who do not behave appropriately are removed from the audience.



FIRE DRILLS AND EMERGENCIES

State law requires that all schools have **fire drills** and **emergency drills**. The purpose of fire drills is to have students exit the building as quickly and as safely as possible. An emergency drill is periodically conducted so that students practice what to do should we need to move students into the interior areas of the school building due to severe or sudden weather conditions. The signal for a fire drill is a series of "beeps" of the fire bell. The sound resembles a cricket (a loud one!) to many children.

Students will be accompanied by a teacher and proceed to the nearest exit. Teachers know the exits and where they are to take their classes. Emergency exits are posted in each room. Students who are not with their classes should join the line of children closest to them, or the closest adult. In the event of an off-site evacuation, you will be notified by an all-call or public announcement how to retrieve your child.

In leaving the building, students are expected to be **quiet** and **orderly** so that they may hear directions. Teachers will periodically review the safety rules to be followed during an emergency.

DISASTER DRILL PROCEDURE

Students are made aware of emergency procedures for disasters (tornado, etc.) as part of the school safety program. A drill is practiced during the year.

Parents are requested to review with their children the safety procedure for a fire or emergency at home as well. Do you have a place outside your home for everyone to meet?



Parents and students must realize that emergency situations can happen at any time. For example, the school septic system could fail. It is the parents' responsibility to review periodically with the child what to do should school suddenly be closed and children are sent home early. The younger the child, the more often you should practice this. Can your child get into the house? Should he/she go to a neighbor? Whom should he/she call?

Each October, the school district schedules an emergency dismissal day when children will be dismissed fifteen minutes early, a time which should be used to **practice emergency plans**. Parents should prepare their children for early closings and inform them of what should be done if the house is locked, empty, etc.

Other drills practiced during the year are a lock-down drill and a shelter drill. During a **lock-down drill**, students sit quietly in a designated corner of their classroom away from view of the interior door. During a **shelter drill**, teachers take their students to a designated safe place to shelter within the building. Students not with their class will go to the nearest adult. Teachers will prepare the students for all drills.

STUDENT COUNCIL

The Student Council is organized for students in grades 1-5. We are proud of our school's student leaders!

The Student Council serves the following purposes:

- ◆ To provide a forum for sharing ideas from the entire student body.
- ◆ To offer opportunities to develop leadership and expression of ideas.
- ◆ To help students take an interest in school activities and to help provide these activities.
- ◆ To assist the teachers and principal in formulating school policies and programs.



Student Council representatives are appointed or elected by each class in the fall. The following is expected of the representatives:

- ◆ To attend all meetings.
- ◆ To be willing to make constructive contributions to the quality of school life.
- ◆ To report back to the class about Student Council activities and decisions.
- ◆ To ask others their opinions and to convey those opinions at the Student Council meetings.

BREAKFAST

A simple breakfast program is available at PQ. The cost is \$1.40. Students report to their classroom, then to the cafeteria. Students do not need to sign up in advance. Reduced price and free breakfast is available according to federal financial guidelines. Parents, please contact the business office for free and reduced price forms (914-669-5414, ext. 1012).

LUNCH

Students may bring a lunch from home or they may select a lunch in the cafeteria. Our school serves hot lunch or sandwiches daily. The cost is \$2.55. Other items are available such as yogurt, fruit, ice cream, trail mix, juices and soup. Milk may be purchased independent of the lunch. Lunches may be paid for by parents in advance in the cafeteria. Reduced price and free lunches are available according to financial guidelines; application forms are available in the office.

Students who forget their money for lunch may borrow it from the cafeteria staff. This is for emergencies only and should not happen often. Parents are notified if a child repeatedly asks to borrow money from the school. Loans should be repaid promptly.

Our teacher aides are the supervisors in the cafeteria. They are asked to encourage children to eat all of their lunch. Soda is not allowed as a beverage.



Lunch is thirty minutes long. Classes have a thirty minute recess period before or after lunch. Children eat at different rates. Some forget to eat and socialize the whole time! Individual problems will be brought to the attention of the parents. We ask parents to please limit snack money and help children to make healthy choices regarding food. Students are expected to clear their own places and throw trash away.

Polite behavior and good manners are always expected. Students who display poor manners will be removed from their class table and will eat lunch separately.

Hot Lunch	\$2.55 (includes milk)
Sandwich Lunch	2.55 (includes milk)
Milk	.65
Breakfast	\$1.40

Our school menu is published monthly on the website.

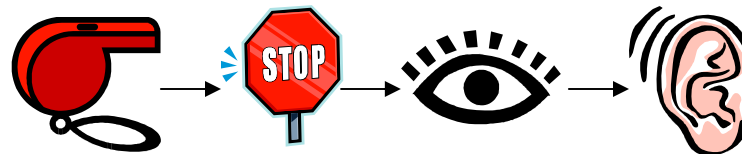
Teachers will advise if they allow snacks during the school day. Kindergarten has a planned snack period; other grades may allow them in class. Healthy food is encouraged. It is up to the parents to guide their child in the selection of snacks.

RECESS

Each grade level is supervised by a team of paraprofessionals for recess. The paras work closely with the classroom teachers and share observations about student behavior. Children are encouraged to share any problems regarding recess with the paras who supervise them. An entire grade level has outdoor recess at the same time, affording children the chance to see their friends from other classes. Our paras rotate where the children play, sharing time on



different play areas. When the paraprofessional blows the whistle, children should stop what they are doing, look, listen and follow directions.



When a class has outdoor recess, children should always use the playground equipment properly, notify a para when anyone is injured and remember that inappropriate behavior such as rough play or fighting will be reported by the para to the classroom teacher and principal if necessary. Corrective action will be taken.

When a class has indoor recess, students are asked to cooperate by keeping the tone of any activity at a moderate level.

The following is expected of all students:

- * Follow directions the first time they are given.
- * Play in designated areas only.
- * Use playground equipment appropriately.
- * Do not fight.
- * No swearing, teasing or name calling.
- * Do not litter.
- * Remember... everyone likes to play. Take turns and be kind to each other.



BIRTHDAYS AND PARTIES

Everyone loves a party and student birthdays can be recognized! If your child would like to send a tray to school in honor of his or her birthday, please notify the teacher **in advance**. Please provide as healthy a tray as possible and be considerate of any children in your child's class with allergies. Please provide something for that student, too. If your child is in a class that is "nut free" you will be notified and asked to avoid all peanut products.



We do not allow children to pass out invitations to birthday parties in school or on the bus. Children who bring invitations to be distributed will have them returned home intact. This activity detracts from the business of school, and may lead to hurt feelings.

Class parties are periodically planned by teachers with the help of class parents. Occasions such as holidays or a special class achievement are often celebrated. Again, healthy food and awareness of students with allergies are appreciated!

WHEN YOU HAVE A QUESTION OR A PROBLEM ABOUT SCHOOL



Students should tell their parents, their teacher or any adult at school. The classroom teacher is usually the closest to understanding and knowing each student the best. All of us want to know when students have a question or are worried about something. We will listen and help to work the problem out. Students should also tell their parents when we solve a problem at school.

Parents should contact their child's teacher if the problem remains unresolved, if they have questions or concerns, or if their child shares a problem with them that the teacher doesn't know about. One of our goals at school is to develop the emotional and social sides of students, as well as the academic. We appreciate parental input.

STUDENT ABSENCE FROM SCHOOL

When a student is to be absent from school, we require telephone notification from a parent for each day of absence. Parents are requested to telephone school **before** 9:00 a.m. to report their child's absence. The Attendance Office answering machine is available 24 hours a day. If a parent neglects to notify us, we will call the parent at home or at work if necessary. This procedure protects all of our students, confirming their arrival at school or non-attendance for the day. If homework is desired, please call before 9:00 a.m. A note will be left for the teacher. Assignments may be picked up between 3:05 and 4:00 p.m. in the PQ main office.

Upon returning to school after an absence, a note to the teacher is required. This note must contain the date/days of absence, the reason for the absence and the parent's signature.

In accordance with the North Salem Attendance Policy, all absences and late arrivals are recorded. Students reported absent more than nine times per trimester, or late on a regular basis, will be reported to the principal for consultation. It is our belief that good attendance and on-time arrivals are essential to success in school.

Being late to school and late for class can be upsetting for a child because he/she arrives after work has started, and misses general directions for the day. It is also unfair and disturbing to others in the class to have the teacher's attention diverted by a latecomer. For this reason, chronic tardiness requires stringent action on the part of the school. Students arriving late report directly to the nurse before going to class. If possible, please call the attendance line if you know your child will be late.

TELEPHONE CALLS

Telephone calls from students to parents are allowed for **emergencies** and only with the permission of the teacher. Students who forget items necessary for the day at school, such as sneakers for gym, etc., should not ask to call their parents except when requested to do so by the teacher. **Every parent is responsible for teaching their child what he/she needs at school on a daily basis.**

Having a regular routine for items such as lunch money, permission notes to stay after school, homework, school books, etc., is very helpful to children. It is also a good idea to get everything ready for school the night before.

Please make after-school arrangements with your child before he or she leaves for school. Telephone messages to be delivered to children not only interrupt the office work, but constitute a real infringement on educational time in the classroom. Parents who call school with these messages are **not** assisting the school with teaching responsible behavior. Of course, in a real emergency, we are happy to help.

Telephone calls from parents to teachers may be made at any time. Teachers' telephone extensions are listed in the school calendar, on the school's website and are available on the telephone system when you dial into the school. (Press "5" for a directory). Telephones do not ring in the classrooms. Teachers will check their voice mail at the end of the day. For messages that must get to the teacher during the school day, please call the office.



SCHOOL HOURS

Students arriving by car before 8:15 a.m. must wait with their parent. Supervision for students begins at 8:15 in the multipurpose room.

Grades K-5	8:25 - 3:05
Early dismissal:	11:30 a.m.
Two-hour delay:	School starts at 10:25 a.m.

If a child is being picked up at school, parents must send in a note with the child. He/she must be signed out at the gym at 3:05 dismissal time.

Late Bus - Leaves PQ at 3:50 p.m. (only for school sponsored activities on designated days).

VISITORS

Visitors are welcome at Pequenakonck! We enjoy meeting relatives of students and new families. All visitors, including parents and school volunteers, are required to stop and sign in at the visitor's desk in the main hallway. Visitors are given a name tag to wear during their visit. A new name tag is required for each visit. Parents are not permitted to stop by the classrooms during the school day without permission from the office. Students are not allowed to bring school-aged friends or relatives to school without prior permission from the classroom teachers. We generally limit such visits to one hour.



PARKING

Parking is **not allowed** in the front of PQ. The bus loading area/fire lane is to remain vacant at all times. Please park in the lower parking lot.



DAILY SCHEDULE

PQ is on a six-day schedule, “A-F” days. In the event that the school is closed due to inclement weather, we will change the letter day to accommodate the snow day. If Monday is an “A” day and Tuesday is a snow day, Wednesday will be a “B” day. This will assure students the most opportunities to visit specials, such as art, music and physical education, as well as their support services.



PERFORMANCE ETIQUETTE

During the year, the students along with the teaching staff work very hard in preparing public performances for family and friends. We have a few friendly reminders.

Arrive on Time: Allow sufficient time to arrive and be seated before the performance begins. If you are delayed, wait for a break in the program to enter.

Attend the Complete Performance: All of the performers have worked hard to prepare the program. Plan on seeing them all perform.

Take Pictures and Videotape From the Side Aisles or the Rear: Picture taking and videotaping at the other locations obstruct and distract those around you.

Escort Young Children at All Times: Be sure to supervise the entry and exit of all young children in your group. Holding their hand during this process prevents them from getting lost or enthusiastically running up and down an aisle with the possibility of being injured.



We are looking forward to having a great year!

**NORTH SALEM CENTRAL SCHOOL DISTRICT
2011-2012 School Calendar**

September 2011						
S	M	T	W	T	F	S
				1	2	3
4	5	6	7	8	9	10
11	12	13	14	15	16	17
18	19	20	21	22	23	24
25	26	27	28	29	30	

October 2011						
S	M	T	W	T	F	S
						1
2	3	4	5	6	7	8
9	10	11	12	13	14	15
16	17	18	19	20	21	22
23	24	25	26	27	28	29
30	31					

November 2011						
S	M	T	W	T	F	S
		1	2	3	4	5
6	7	8	9	10	11	12
13	14	15	16	17	18	19
20	21	22	23	24	25	26
27	28	29	30			

December 2011						
S	M	T	W	T	F	S
				1	2	3
4	5	6	7	8	9	10
11	12	13	14	15	16	17
18	19	20	21	22	23	24
25	26	27	28	29	30	31

January 2012						
S	M	T	W	T	F	S
1	2	3	4	5	6	7
8	9	10	11	12	13	14
15	16	17	18	19	20	21
22	23	24	25	26	27	28
29	30	31				

February 2012						
S	M	T	W	T	F	S
			1	2	3	4
5	6	7	8	9	10	11
12	13	14	15	16	17	18
19	20	21	22	23	24	25
26	27	28	29			

SEPTEMBER

- 9/1-2 Superintendent's Conference Days
- 9/5 Labor Day
- 9/6 Schools Open
- 9/29-30 Rosh Hashanah

Total Days: 17 student
2 Supt. Conference Days

OCTOBER

- 10/7 Early Dismissal – Professional Development Day
- 10/10 Columbus Day

Total Days: 20 student
½ PD Day

NOVEMBER

- 11/10 Professional Development Day
- 11/11 Veteran's Day
- 11/23 Early Dismissal
- 11/24-25 Thanksgiving Recess

Total Days: 18 student
1 PD Day

DECEMBER

- 12/23 Early Dismissal
- 12/26-30 Holiday Recess

Total Days: 17 student

JANUARY

- 1/1 New Year's Day
- 1/2 Holiday Recess
- 1/16 Martin Luther King Day

Total Days: 20 student

FEBRUARY

- 2/20-24 Winter Recess

Total Days: 16 student

March 2012						
S	M	T	W	T	F	S
				1	2	3
4	5	6	7	8	9	10
11	12	13	14	15	16	17
18	19	20	21	22	23	24
25	26	27	28	29	30	31

April 2012						
S	M	T	W	T	F	S
1	2	3	4	5	6	7
8	9	10	11	12	13	14
15	16	17	18	19	20	21
22	23	24	25	26	27	28
29	30					

May 2012						
S	M	T	W	T	F	S
		1	2	3	4	5
6	7	8	9	10	11	12
13	14	15	16	17	18	19
20	21	22	23	24	25	26
27	28	29	30	31		

June 2012						
S	M	T	W	T	F	S
					1	2
3	4	5	6	7	8	9
10	11	12	13	14	15	16
17	18	19	20	21	22	23
24	25	26	27	28	29	30

MARCH

- 3/16 Early Dismissal – Professional Development Day
- 3/23 Professional Development Day

Total Days: 21 student
1 ½ PD Days

APRIL

- 4/2-6 Spring Recess

Total Days: 16 student

MAY

- 5/28 Memorial Day

Total Days: 22 student

JUNE

- 6/22 Last Day of School
- 6/25 Professional Development Day

Total Days: 16 student
1 PD Day

183 Student
+ 3 Professional Development Day
+ 2 Superintendent's Conference Day

188

School Closed

No Students

NOTE:

Weather make-up days to be taken in the following order: 4/2, 4/3, 4/4, 4/5, 6/25

Adopted: 03/09/11

Pequenakonck Elementary School
173 June Road
North Salem, New York 10560

Phone: 914-669-5317

Fax: 914-669-4326

Web address: www.northsalemschools.org